

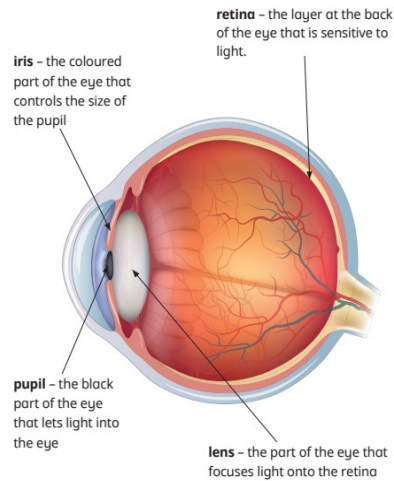


# Mossfield Primary School Knowledge Organiser

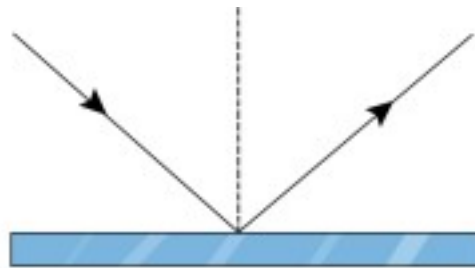


Year 6 — **Light** — Explain that we see things because light travels from light sources to our eyes or from light sources to objects and then to our eyes. Use the idea that light travels in straight lines to explain that objects are seen because they give out or reflect light into the eye. Use the idea that light travels in straight lines to explain why shadows have the same shape as the objects that cast them. Recognise that light appears to travel in straight lines.

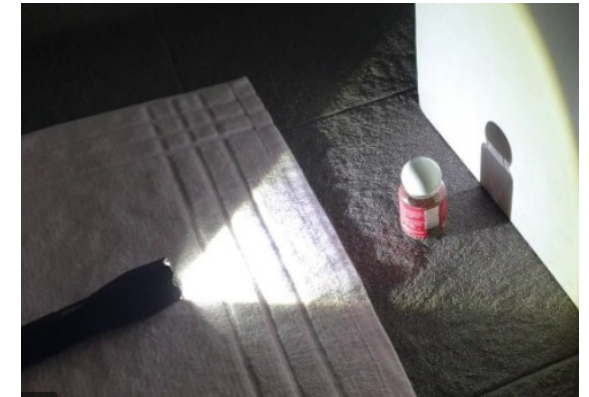
## How we see



## Light and straight lines



## Shadow formation



## To plan, investigate and evaluate a shadow investigation



## Refraction and explore light

### Effect of refraction



## What is light pollution and how can we reduce it?



# Key Vocabulary

Coloured filter	A coloured filter is like a special pair of glasses or a coloured sheet that lets only its own colour of
Iris	The coloured part of your eye that controls how much light goes into your eye by changing the size
Lens	A material that is curved on one or both sides. Lenses are used to bend or focus light, such as with-
Medium	Something that is in the middle of a range.
Prism	A 3D shape with two identical, parallel faces (the bases) that are the same shape, such as a triangle
Pupil	The black, open part in the middle of your eye that lets light enter to help you see, and its size
Rainbow	A rainbow is a colourful, curved band of light that appears in the sky when the sun shines through
Ray diagram	A ray diagram for KS2 is a simple drawing that shows how light travels in a straight line to help ex-
Refraction	When lights passes through a transparent material, it slows down and changes direction.
Retina	The light-sensitive layer at the back of the eye that captures images and sends signals to the brain
Solar eclipse	A solar eclipse happens when the Moon passes directly between the Sun and the Earth, blocking
Spectrum of light	The spectrum of light is the band of colours, like those in a rainbow, that you see when white light