



Mossfield Primary School Knowledge Organiser



Year 5 — **Life Cycles** — Describe the differences in the life cycles of a mammal, an amphibian, an insect and a bird.

Reproduction - Describe the life process of reproduction in some plants and animals.

Life cycles of mammals



Life cycles of amphibians (frogs)



Life cycles of insects



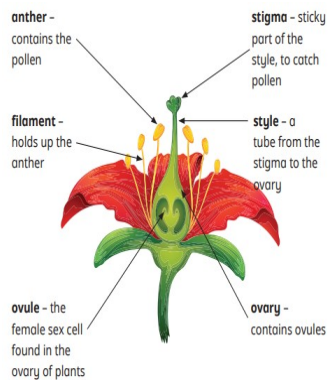
Life cycles of birds



Sexual reproduction in mammals



Reproductive parts in plants



Pollination



Asexual reproduction



Plan and plant – clone plants



Findings – clone plants & interpret data



Key Vocabulary

Anther	An anther is the part of a flower that makes and holds the pollen.
Asexual reproduction	Asexual reproduction involves one parent and produces offspring that has the same characteristics as the parent.
Chrysalis	A chrysalis is the hard, protective shell a caterpillar forms during the middle stage of its life cycle (called metamorphosis) to transform into a butterfly, acting like a special, safe sleeping bag where it changes from a crawling larva into a flying adult.
Clone	A clone is like an exact copy or a genetic twin of a living thing, like a plant or animal, made by humans or naturally, with the same DNA, such as identical twins or a plant grown from a cutting.
Cutting	A cutting is a piece of a plant's stem, leaf, or root that is removed and used to grow a new, separate plant.
Egg cells	An egg cell is defined as the female sex cell, also known as an ovum.
Embryo	An embryo is defined as a baby animal or plant in the early stages of its development
Fertilisation	Fertilisation is the joining together of a male sex cell and a female sex cell to create the first cell of a new living thing.
Fledgling	A fledgling is a young bird that has recently left its nest and is learning to fly, but is still dependent on its parents for food and protection.
Hatchling	A hatchling is defined as a baby animal that has just broken out of, or emerged from, its egg.
Mammary gland	The mammary gland is an organ found in female mammals that produces milk to feed their young.
Metamorphosis	Metamorphosis is a biological process by which an animal physically develops including birth transformation or hatching, involving a conspicuous and relatively abrupt change in the animal's body structure through cell growth and differentiation.
Monotreme	Monotremes are defined as a unique group of mammals that lay eggs. They are the only mammals in the world to do this, combining features of
Nestling	A nestling is a young bird that is too young to leave the nest and is completely dependent on its parents for food and care.
Larva	A larva (plural: larvae) is the young, immature form of an animal that hatches from an egg and looks completely different from its adult form.
Ovary	Seeds are formed inside the ovary of a flower. An ovary is a female reproductive organ
Ovule	An ovule is defined as the part of a flower that contains the female sex cell.
Parent plant	A parent plant is defined as a plant that has reproduced to create new plants, which are called offspring.

Reproduction	Creating offspring by a sexual or asexual process.
Runner	A runner (also known as a stolon) is a special type of horizontal stem that grows along the surface of the soil. Its main
Sexual reproduction	Sexual reproduction is a biological process where a new living thing (offspring) is created by combining genetic infor-
Sperm cells	A sperm cell is the male sex cell, or gamete, which carries half of the genetic information needed to create a new or-
Stigma	The stigma is the top, sticky part of a flower's female reproductive organ (the pistil or carpel) that receives pollen
Style	The style is a slender stalk in the pistil of a flower that connects the stigma to the ovary.
Tuber	A tuber is a thick, swollen, underground part of a plant's stem or root that stores food, mainly as starch. This stored energy helps the plant survive conditions like winter or drought and allows it to grow new plants.