



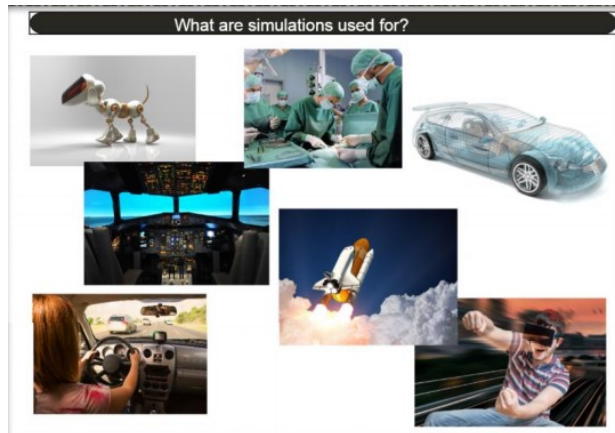
# Mossfield Primary School Knowledge Organiser



Year 3 — **Simulations**. A computer simulation is a program that models a real-life situation. They let you try things out that would be too difficult or dangerous to do in real life.

## Key Learning

To consider what simulations are.



To explore a simulation.



To analyse and evaluate a simulation.

The lead rescuer has fallen down a crevasse! It is 100metres deep. What are you going to do? Carry on when you have made your decision.

We have established a means to rescue our crew mate.	We have made the decision to leave our crew mate to their certain death.	We have another plan.
--	--	-----------------------



# Key Vocabulary

Model	A representation of a real-life system or situation.
Program	Provide (a computer or other machine) with coded instructions for the automatic performance of a task.
Real-life	Drawn from or drawing on actual events or situations.
Represent	To present a picture, image, or likeness of.
Simulation	A computer simulation is a program that models a real-life situation. They let you try things out that would be too difficult or dangerous to do in real life.